

PROJECT DATA:

Target	-	125,293 SF
J.C.Penney	-	80,736 SF
Dillard's	-	156,884 SF
Anchor #1: Barnes & Noble	-	26,080 SF
Anchor #2: Best Buy	-	21,500 SF
Anchor #3: Jos A Bank	-	4,027 SF
Anchor #4: Bed Bath & Beyond	-	25,021 SF
Shops		238,585 SF

TOTAL GLA (PHASE 1) 678,126 SF

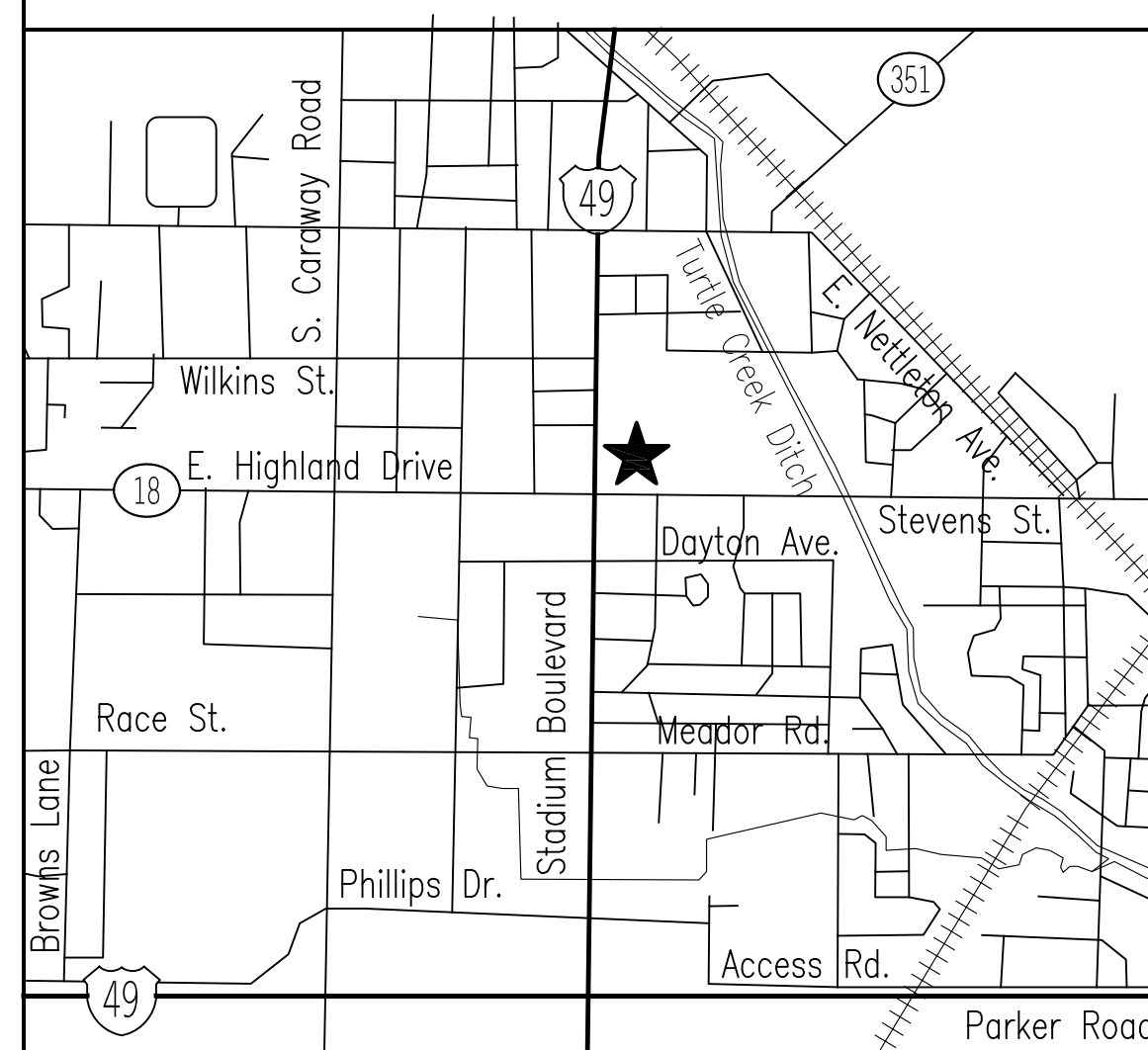
J.C.Penney Expansion	14,000 SF
Dillard's Expansion	39,780 SF
FUTURE TOTAL GLA	731,906 SF

Total Parking (Phase 1)	= 3,131 spaces
Parking Ratio	= 4.66

Total Parking (Future)	= 3,373 spaces
Parking Ratio	= 4.65

Total Site Area	= Approx. 73 AC
Total Outparcels	= Approx. 7.36 AC
Mall Development Site	= Approx. 65.64 AC

All Project Data is approximate.
All Department Store layouts are preliminary.



VICINITY MAP

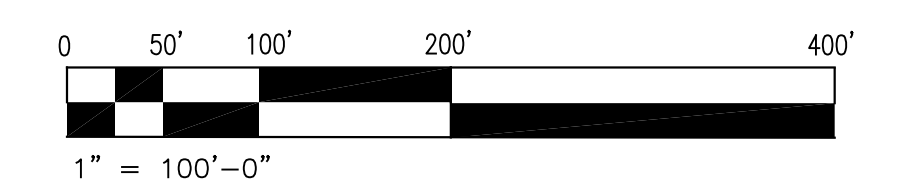
PROJECT ADDRESS:
The Mall at Turtle Creek
3000 East Highland Drive
Jonesboro, Arkansas 72401



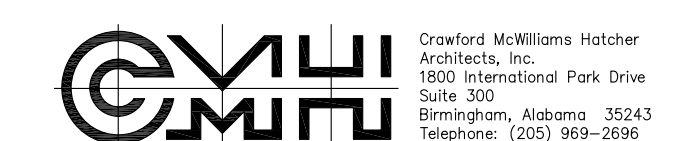
BELZ • BURROW DEVELOPMENT GROUP • DAVID HOCKER & ASSOCIATES, INC.
Jonesboro, AR Owensboro, KY

May 4, 2011

Site Plan



NOTE: THE SITE PLAN IS INTENDED FOR MARKETING PURPOSES TO SHOW THE LOCATIONS AND AREAS OF PROPOSED MERCHANDISE. INFORMATION SHOWN IS SUBJECT TO CONTINUED REVISIONS.



05/04/11

CMH #813.00